

Instructions for Launching Simulations

Please read before you begin:

- Please read all instructions before you begin the simulation
- Start EDEX_00 and the EDEX the case is loaded on to successfully go through the simulation.
- There are **two parts** to the WOC Severe Simulation, please pay attention to the Macro information when starting the simulation
 - You can choose the 2 hour simulation or try the bonus exercises.

I. Launch WES-2 Bridge

1. Method 1: Launch from menu (Figure 1)
 - a. Select the “Applications” menu.
 - b. Select “WDTD”.
 - c. Select “WES-2 Bridge”.

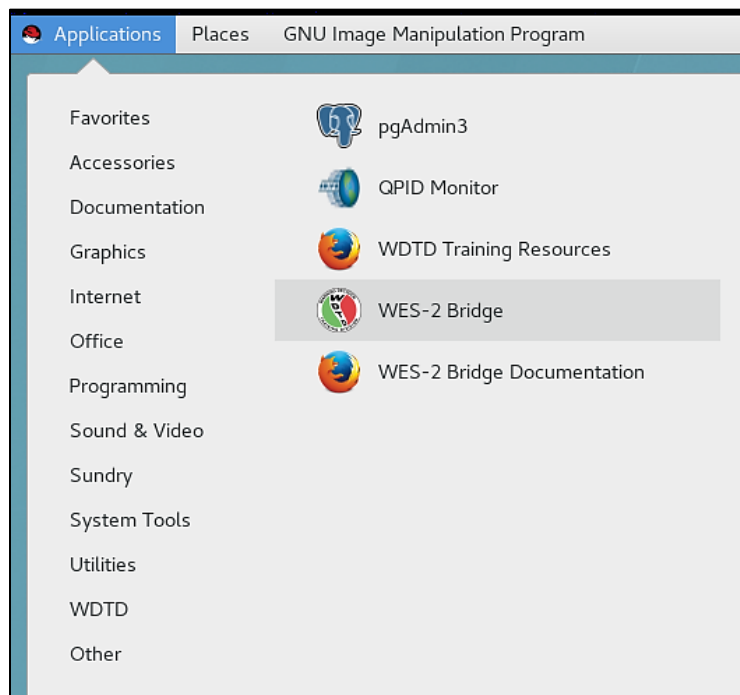
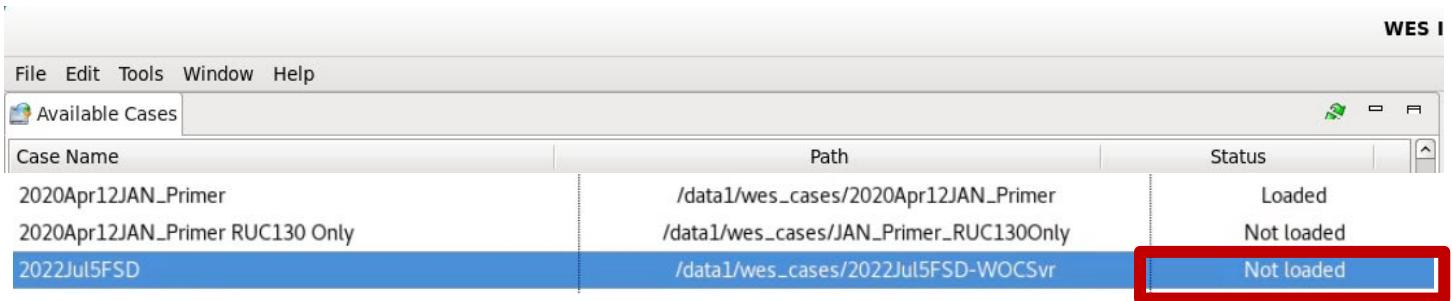


Figure 1. Launching WES-2 Bridge from the menu

II. Check to see if the case is loaded

1. In the “WES II Bridge” window, find the case in the “Available Cases” tab. (i.e., titled “2022Jul5FSD”)
2. Check the case’s status (Figure 2)
 - i. If status is “Not loaded”, then proceed to Step III (Load Case).



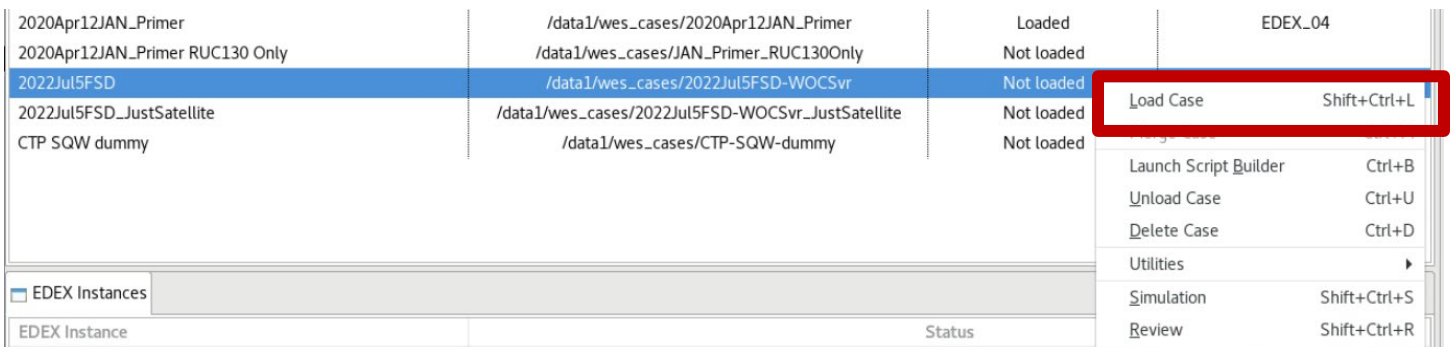
Case Name	Path	Status
2020Apr12JAN_Primer	/data1/wes_cases/2020Apr12JAN_Primer	Loaded
2020Apr12JAN_Primer RUC130 Only	/data1/wes_cases/JAN_Primer_RUC130Only	Not loaded
2022Jul5FSD	/data1/wes_cases/2022Jul5FSD-WOCsVr	Not loaded

Figure 2. Available Cases tab, with case “Not loaded” (boxed in red)

- ii. If status is “Loaded”, note which EDEX is used for this case, then proceed to Step IV (Launch the Simulation).

III. Load the case

1. In the “Available Cases” tab, right-click the case name and click “Load Case” (Figure 3).



2020Apr12JAN_Primer	/data1/wes_cases/2020Apr12JAN_Primer	Loaded	EDEX_04
2020Apr12JAN_Primer RUC130 Only	/data1/wes_cases/JAN_Primer_RUC130Only	Not loaded	
2022Jul5FSD	/data1/wes_cases/2022Jul5FSD-WOCsVr	Not loaded	
2022Jul5FSD_JustSatellite	/data1/wes_cases/2022Jul5FSD-WOCsVr_JustSatellite	Not loaded	
CTP SQW dummy	/data1/wes_cases/CTP-SQW-dummy	Not loaded	

Load Case

Shift+Ctrl+L

Launch Script Builder

Ctrl+B

Unload Case

Ctrl+U

Delete Case

Ctrl+D

Utilities

Simulation

Shift+Ctrl+S

Review

Shift+Ctrl+R

Figure 3. Right-click case name and select “Load Case”

- a. If a window appears saying “All EDEXs are full” (Figure 4), click OK and unload a loaded case from your “Available Cases” list. Once you do this, try again to “Load Case”, as described above.

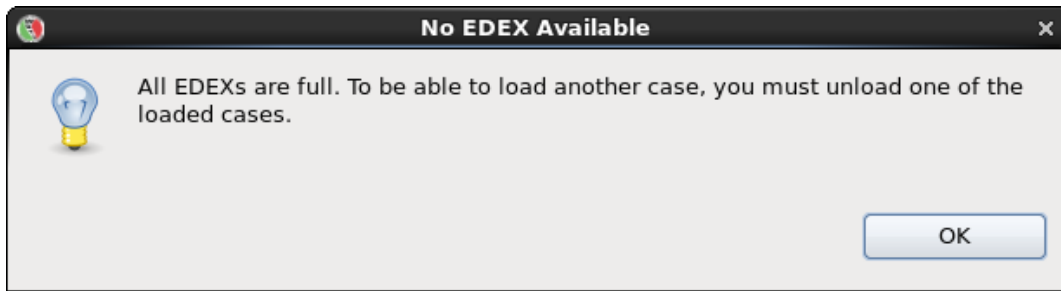


Figure 4. No EDEX Available window

- b. If a window appears saying “Do you want WES to start EDEX?” (Figure 5), click “Yes”.
 - i. This will start an EDEX, and then open the “Load Case” tab.

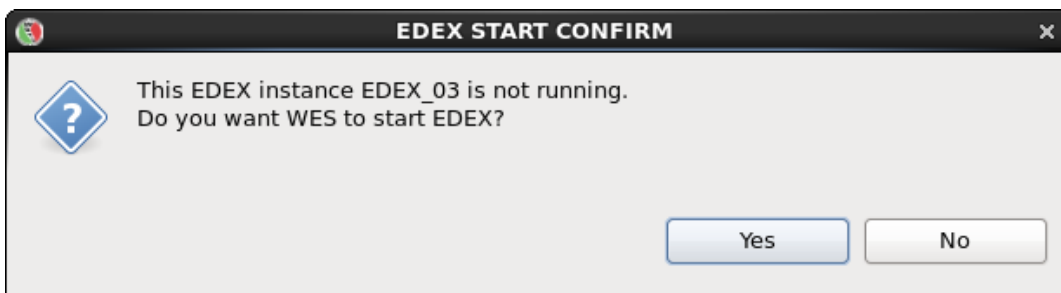


Figure 5. EDEX Start Confirm window

2. Ensure all details are correct in the “Load Case” tab (Figure 6).
 - a. Do NOT change the time window for loading the case!
3. Click “Load” (NOTE: it could take up to an hour to load, but normally it is much faster, about 15-30 minutes or so).

2022Jul5FSD

Load Case

2022Jul5FSD

☐ Case Information

Name and location of the case.

Case Location: /data1/wes_cases/2022Jul5FSD-WOCSvr

Case Name: 2022Jul5FSD

Case Description:

☐ Case Create Information

☐ Load Data Window

The Load window must be within the Case Data Window range.

Case Start Date: 2022-07-05 12:00

Start Date: 2022-07-05 12:00 Set Date

Case End Date: 2022-07-06 00:00

End Date: 2022-07-06 00:00 Set Date

WFO (1) + x

FSD - Case

Data Types (44) + x

AIREP
Acars
Acarssounding
Airmet
BUFR MSG (44)

Load
Add WFO
Add Data Types

Figure 6. Load Case window, with “Load” boxed in red

IV. Launch the simulation

1. Before starting the simulation, make sure EDEX_00 is “Active” (Figure 7).

i. If it is not, right-click EDEX_00 and choose “Start EDEX”.

NOTE: EDEX_00 MUST be active in order to use WESSL!

ii. If the case was already loaded on an EDEX, you must start that EDEX as well

EDEX Instance	Status
EDEX_00	Active
EDEX_01	Not Active

Figure 7. EDEX instances tab, with EDEX_00 as “Active”

- 2. Once the case is done loading, the status will read “Loaded”.
- 3. Right-click the case name again, and click “Simulation” (Figure 8).

2020Apr12JAN_Primer RUC130 Only	/data1/wes_cases/JAN_Primer_RUC130Only	Not loaded	
2022Jul5FSD	/data1/wes_cases/2022Jul5FSD-WOCSvr	Loaded	
2022Jul5FSD_JustSatellite	/data1/wes_cases/2022Jul5FSD-WOCSvr_JustSatellite	Not loaded	
CTP SQW dummy	/data1/wes_cases/CTP-SQW-dummy	Not loaded	

Load Case

Shift+Ctrl+L

Merge Case

Ctrl+M

Launch Script Builder

Ctrl+B

Unload Case

Ctrl+U

Delete Case

Ctrl+D

Utilities

Simulation

Shift+Ctrl+S

Review

Shift+Ctrl+R

Figure 8. Available Cases tab, with case being run as a “Simulation”

- 4. On the “Simulation” tab, click “Load Macro” (Figure 9).
 - i. You may need to scroll to the far right to see these buttons
 - ii. See figure 12a for button location

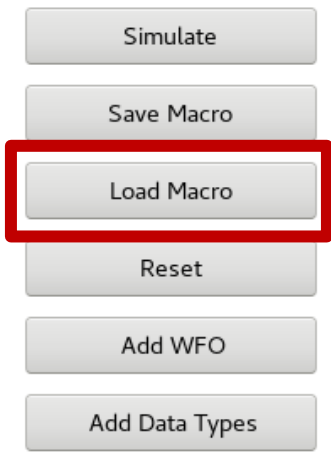


Figure 9. “Load Macro” on the right side of the Simulation tab

- 5. In the Macro Selection GUI, choose the macro for the corresponding simulation application, and press OK (Figure 10).

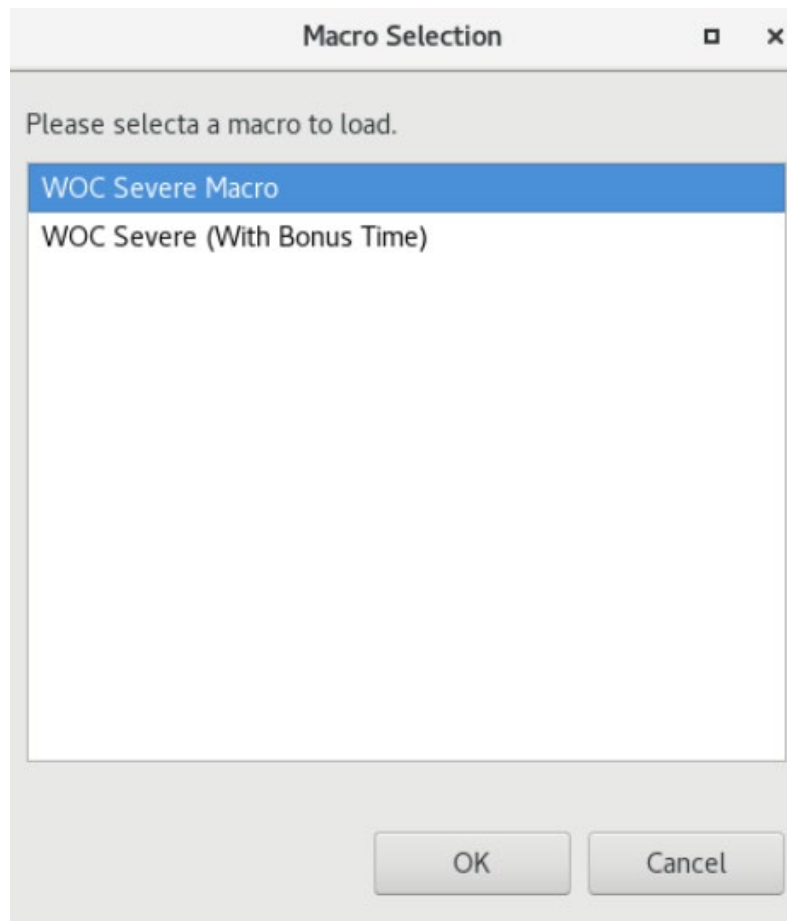


Figure 10. Macro Selection window

6. Using Table 1 (and Figure 11), ensure all details are correct in the “Simulation” tab for the given simulation application, particularly:
 - i. Simulation Data Time Range – Start Date
 - ii. Simulation Data Time Range – End Date
 - iii. WESSL Script
7. Click “Simulate” (A pop-up window will appear, and CAVE will open). An “invalid localization” window will pop up saying the selected localization is invalid. Click Yes. A CAVE will pop up, along with a WESSL window, and Sim Control.

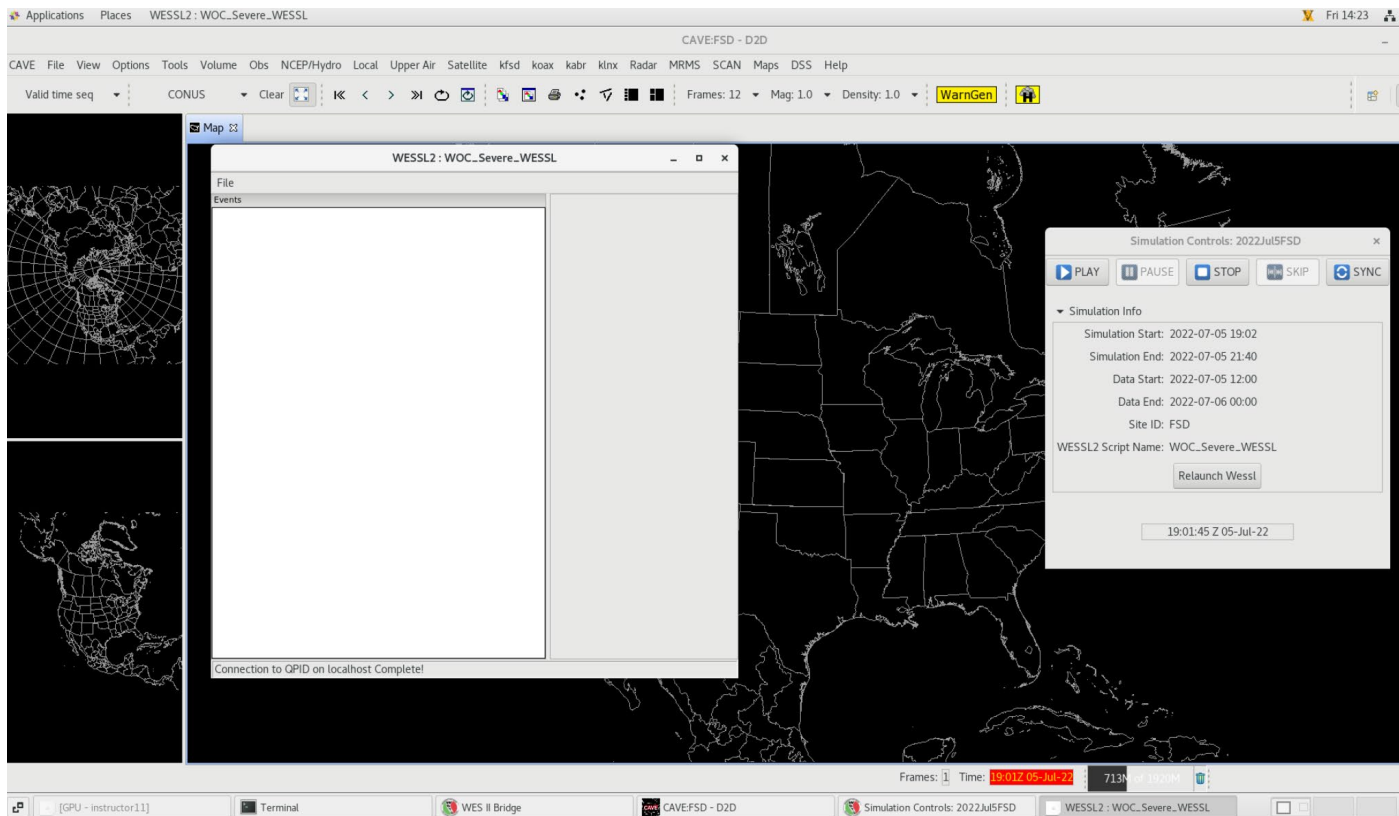


Figure 11. CAVE, WESSL, and sim control window

Table 1. Macro, start date, end date, and WESSL script for Simulation #1 and #2

Simulation #1	
Macro	WOC Severe Macro
Simulation Data Time Range Start Date	2022-07-05 19:02
Simulation Data Time Range End Date	2022-07-05 21:40
WESSL Script	WOC_Severe_WESSL
Simulation #2 (Bonus Time)	
Macro	WOC Severe (With Bonus Time)
Simulation Data Time Range Start Date	2022-07-05 19:02
Simulation Data Time Range End Date	2022-07-05 23:00
WESSL Script	WOC_Severe_WESSL

V. Begin the simulation

1. Once CAVE has opened, find the Simulations Control GUI (Figure 12).

NOTE: While this GUI is often covered by other windows that WES-2 Bridge opens, you can easily find it by clicking on its tab in the bottom panel of your desktop.

2. Click the “Play” button in the Simulation Controls GUI. The WESSL script should run and reports will start populating.

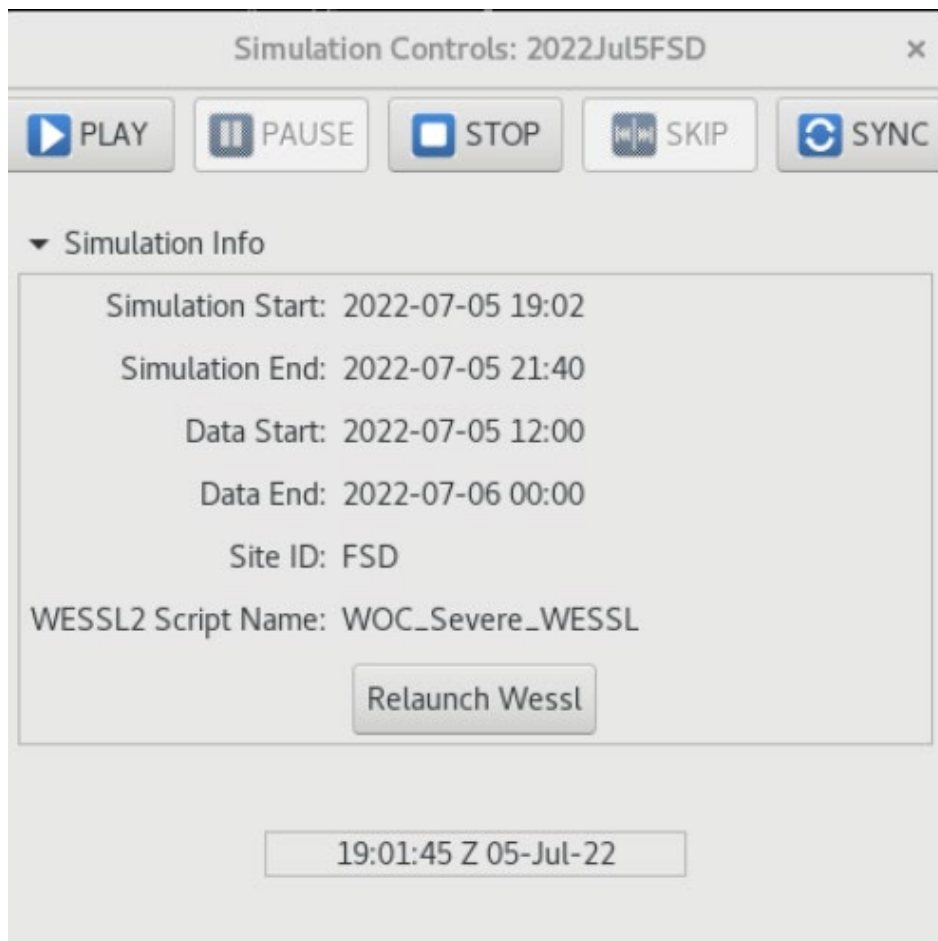


Figure 12. Simulation Control GUI

VI. [Simulation Application #2] Open a Text Workstation

1. In CAVE, open the "CAVE" menu.
2. Select "New".
3. Then select "Text Workstation" (Figure 13).

NOTE: This MUST be opened in order to use WarnGen!

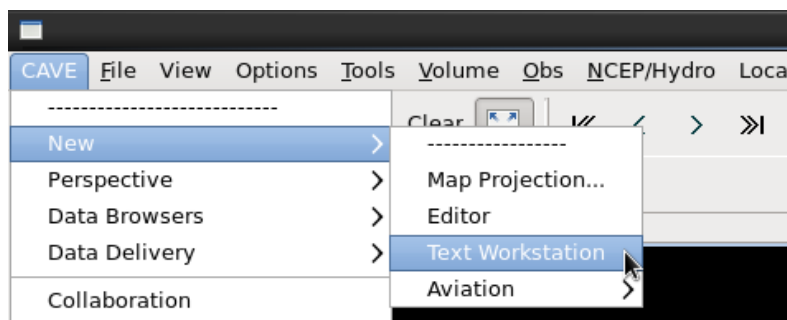


Figure 13. Opening a new text workstation in CAVE