

Running Snoopy in AWIPS-2

Mike Callahan, Senior Service Hydrologist at WFO Louisville, developed the Snoopy application for working with the Hydro database. It runs well in AWIPS-2.

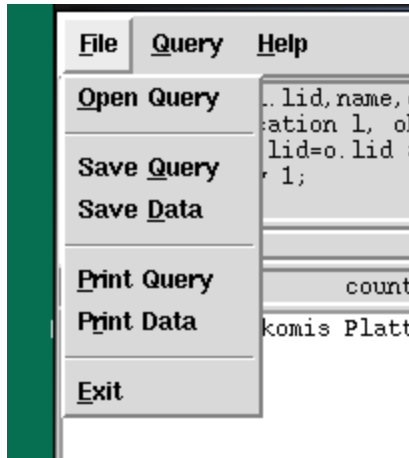
There may be a couple small things you need to know or do to start it routinely, however, depending on how you started in in AWIPS-1.

1. Location of the application - Your ITO may have moved Snoopy to the baseline location for local apps in AWIPS-2. This was a "prep" step for getting ready for the AWIPS-2 install. That baseline location is localapps.
2. Put Snoopy into /awips/dev/localapps if you do not already have it elsewhere on the system.
 - a. Snoopy and docs are available from the Software Collaboration Portal at <https://collaborate.nws.noaa.gov/trac/nwsscp/wiki/AppsAwips/Snoopy> (expand the Attachments tab at the bottom)
 - b. Note: Rating table update program (RUHT) is available here, also at <https://collaborate.nws.noaa.gov/trac/nwsscp/wiki/Hydro/Ruht>
3. If you would like Snoopy to appear in the AWIPS start-up menu, get the ITO to edit the local.conf file on each workstation...
 - a. `cd /awips/fxa/data/appLauncher`
 - b. `gedit local.conf` (and add...
START_RECORD
Name=Snoopy(localapp)
Exec= /localapps/snoopy/snoopy.py > /dev/null
END_RECORD

Start Snoopy either form a script (per your ITO) or from the AWIPS startup menu. Snoopy opens displaying the results of a Default query – shown in the top

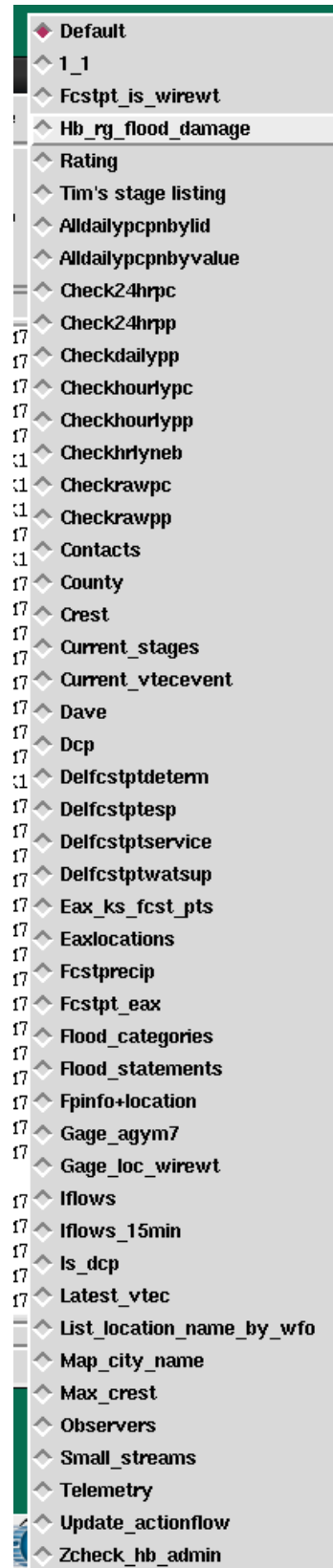
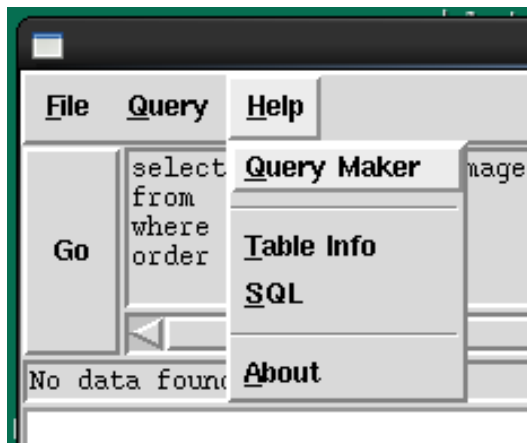
lid	name	county	firstname	lastname	hphone	phone	sn
ABAM7	Albany 2w	Gentry	USGS				
AGYM7	Agency	Buchanan	BILL	BRINTON		816-383-0604	23-0031-10
ALAM7	Albany	Gentry	DEB	MILLER		660-726-4234	23-0051
AMTM7	Amity 4ne	DeKalb	WAYNE	COLHOUR	816-449-2280		23-0143-1
ARHM7	Archie 1e	Cass	USGS				
ATCK1	Atchison	Atchison	MAX	PURDY	913-367-5561		14-0402-3
ATHK1	Atchison	Atchison	JOSEPH	RYAN		913-367-5340	14-0405-3
ATSK1	Atchison 1s	Atchison	JIM	OWENS		913-367-5566	14-0408-0
	Blackwater	Cooper	USGS				

File menu options are ...



Hold down the **Query** menu to see available stored queries like these →

Help menu options are ...



Choose **Table Info** under **Help** to see a scrollable list of all the tables in the Hydro DB.

Then, highlight the table of interest, such as **floodcat** in this example.

Click on **Explain** to get an explanation of that table.



Click on **Columns** to see a list of the column names in that table (then you can click **Explain** for each of them also).

Click on **Brief** to see a 1-page list of data for that table.

Click on **Full** to see the full list of data for that table.

I use Snoopy a LOT just to check on table names and columns in those tables.

Queries

At any point, you can type in your own query into the query section at the top of Snoopy, then click **Go** to run the query.

Under the **File** menu, you can **Save Query** to add it to your stored **Query** list.