

AWOC Severe 2015 WES-2 Simulation: QUICK START GUIDE

- 1). Open an instance of WES-2 Bridge (see jobsheets if you need assistance.)
- 2). Find the case labeled "2015May23OUN". Right click on this field and select "Load Case."
**** NOTE: Check the "Status" column. If the case says, "Loaded", DO NOT load it again. Only load the case if the Status is "Not Loaded". If the case is already loaded, skip to Step 4. ****

The screenshot displays the WES II Bridge application window. The main area is titled "Available Cases" and contains a table with the following data:

Case Name	Path	Status	EDEX Instances
2015May23OUN	/data1/wes_cases/KOUN_AWOCSevere	Not loaded	
Hydro Case WFO Hydro Capability AWOC FF	/data1/wes_cases/KDMX_Hydro	Not loaded	
WES Mini Test Case 14_2_4_20150725	/data1/wes_cases/WES_MinTestCase_14_2_4_20150725	Not loaded	
WES Test Case 14_2_4_20150725	/data1/wes_cases/WES_Test_Case_14_2_4_20150725	Not loaded	
Winter Readiness Dual Pol Exercise	/data1/wes_cases/KCAR_Winter	Loaded	EDEX_04

Below the "Available Cases" table is a section titled "EDEX Instances" with the following data:

EDEX Instance	Status
EDEX_00	Active
EDEX_01	Not Active
EDEX_02	Active
EDEX_03	Not Active
EDEX_04	Not Active

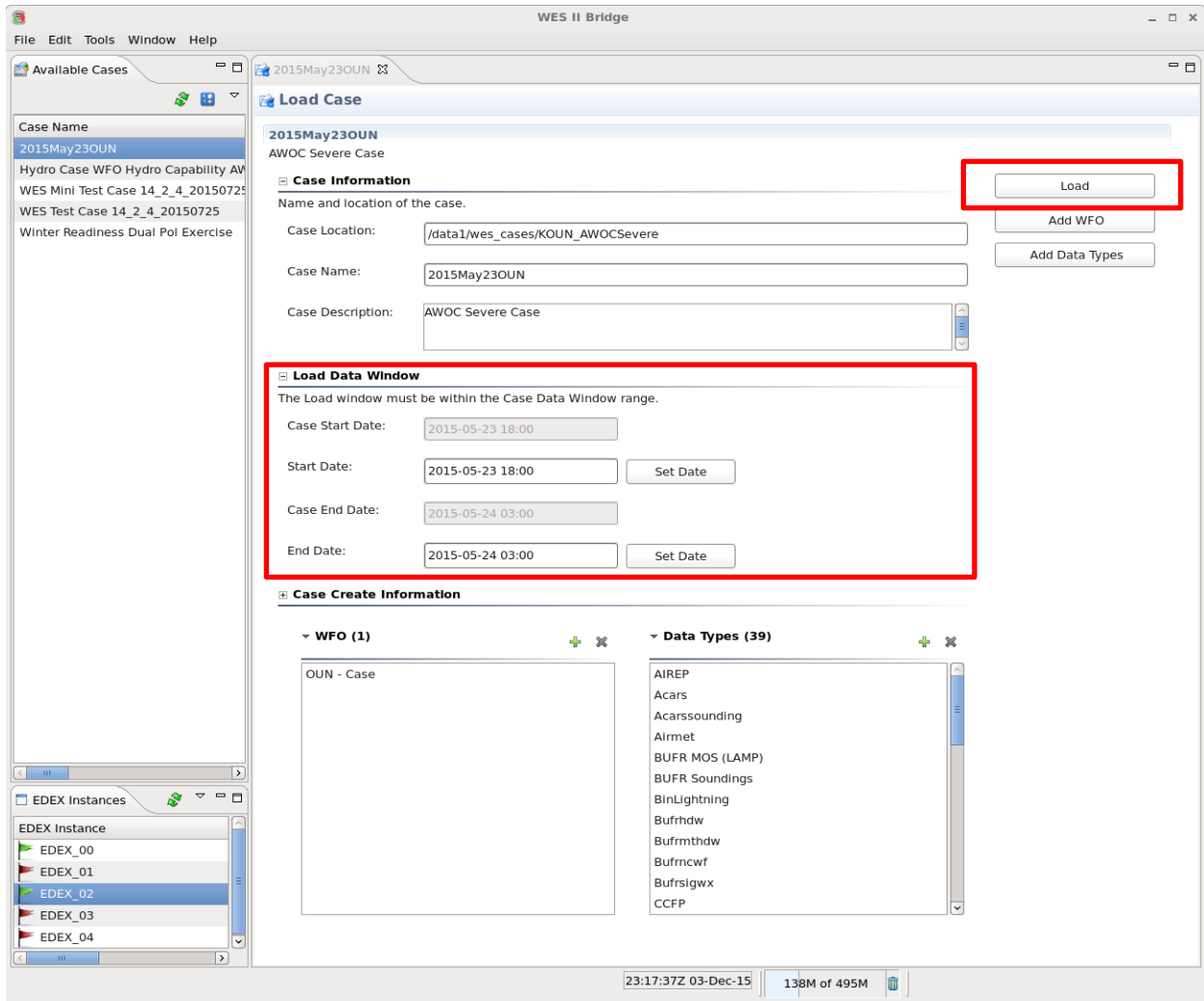
The bottom status bar shows the time "23:14:25Z 03-Dec-15" and memory usage "128M of 495M".

3). From the window shown below, change the Start and End times for the case data. Click on “Set Date” for both times and modify the calendar window that opens up to:

Start Date: 2015-05-23 18:00 UTC

End Date: 2015-05-24 03:00 UTC

Then click “Load.”



4). Once the case is loaded, right-click again on “2015May23OUN” case name and select “Simulation” in the main WES-2 Bridge Window.
Change the simulation Start and End times to:

Start Date: 2015-05-23 21:00

End Date: 2015-05-24 01:10

5). On the simulation window, make sure that the “Case_Script” WESSL-2 script is selected. Make sure you select, “Remove Warnings for the WFO”. Then press “Simulate.” Make sure the Case Simulation setup window looks like the image below. Once “Simulate” is clicked, CAVE will open up.

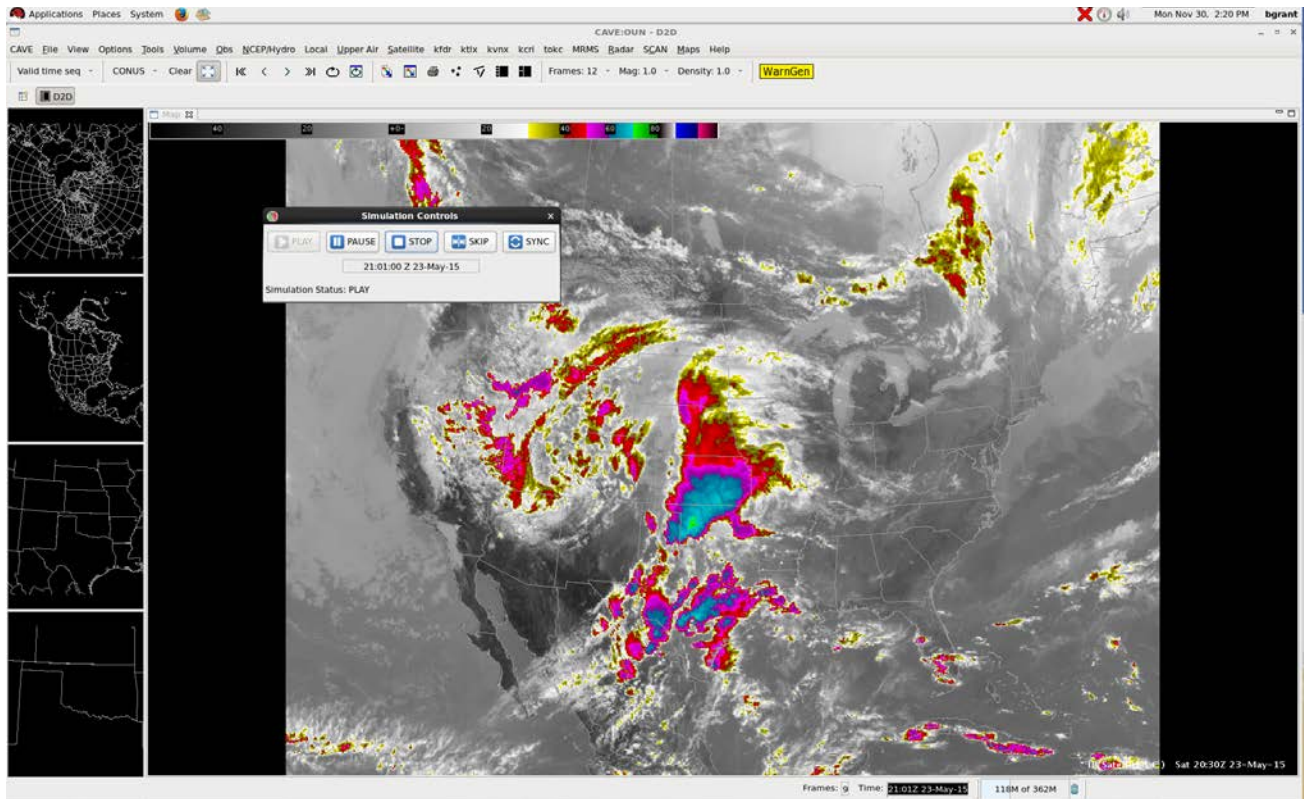
The screenshot shows the 'Simulation' window for case '2015May23OUN'. The window is divided into several sections:

- Case Information:** Includes fields for Case Location, Case Name, Case Description, Is Remote, and Host.
- Load Data Time Range:** Includes fields for Case Start Date, Start Date, Case End Date, and End Date.
- Simulation Data Time Range:** Includes fields for Start Date, End Date, and WESSL Script.
- Case Creation Information:** Includes a list of WFOs and Data Types.

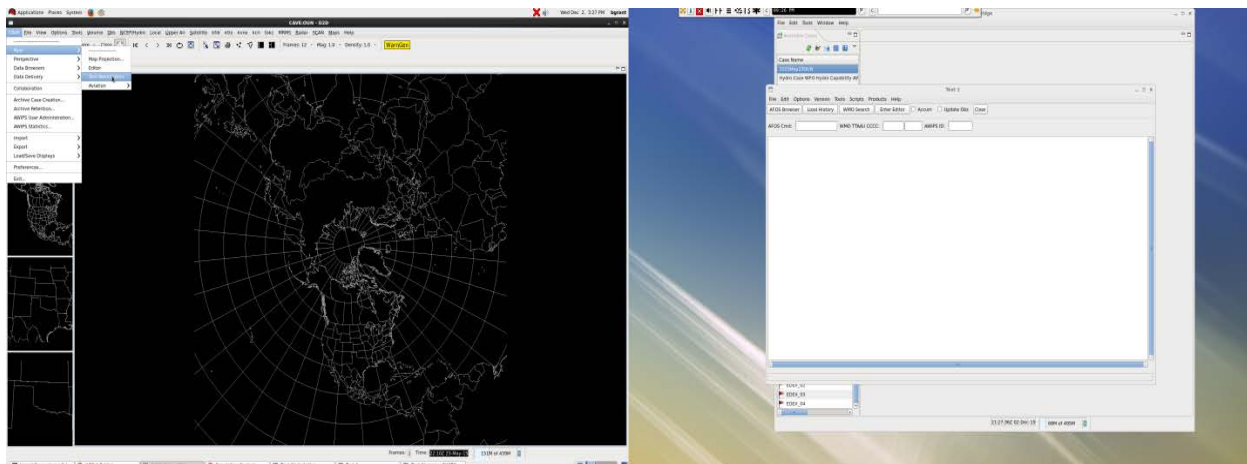
Key annotations in the image:

- A red box highlights the 'Simulate' button.
- A red arrow points from a red box on the left ('Ensure you select Remove warnings.') to the 'Remove warnings for the WFO' checkbox.
- A red arrow points from a red box on the right ('Ensure you select the WESSL Script here.') to the 'Case_Script' dropdown menu.

6). Click the “PLAY” button in the Simulation Controls window, which will pop-up about the same time CAVE opens, to start the simulation.



7) Open a Text window. Under the CAVE drop-down menu, select “New”, “Text Workstation”. This will open up a text window on the other monitor which will enable you to create WarnGen Text.



8). Run through the simulation. Use the AWOC Severe WES Simulation Guide to help you complete the simulation, which runs about 4 hours at maximum duration. You will not need to repeat the case loading steps after the first time, just steps #4-8.