

FY17 WOC Flash Flood

Instructions for Loading Cases

(for Simulations #1, #2, and #3)

I. Launch WES-2 Bridge

1. Method 1: Launch from menu (Figure 1)
 - a. Select the “Applications” menu.
 - b. Select “WDTD”.
 - c. Select “WES-2 Bridge”.

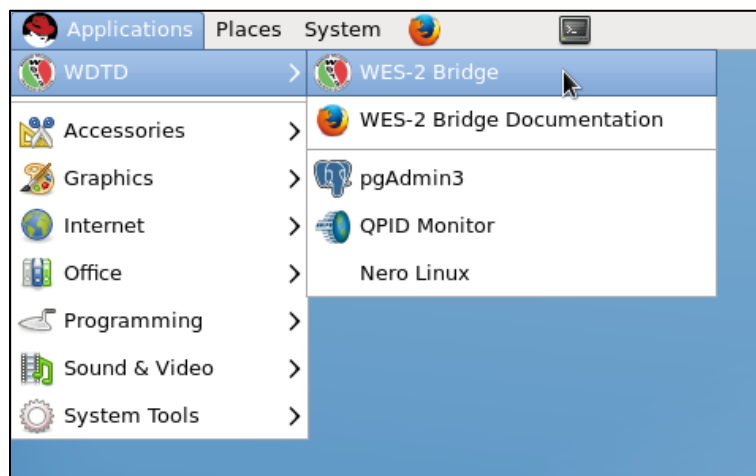


Figure 1. Launching WES-2 Bridge from the menu

2. Method 2: Launch from terminal window (Figure 2)
 - a. Open a terminal window.
 - b. Type “*cd /w2b/wes/*”
 - c. Type “*./wes.sh*”

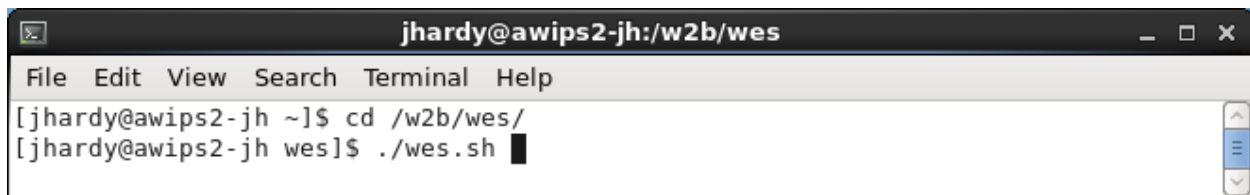


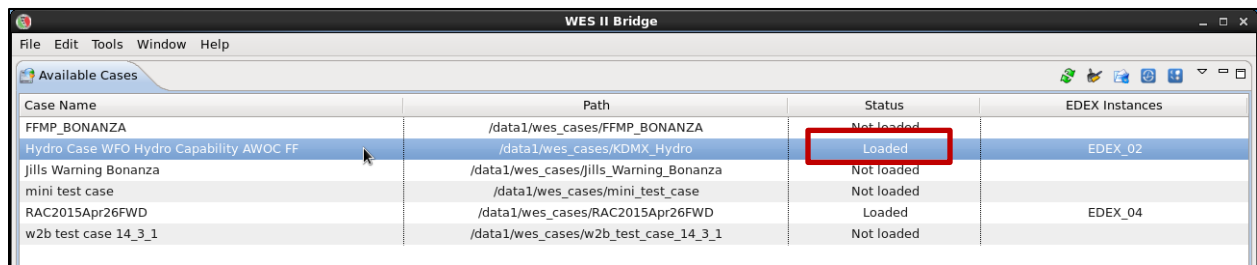
Figure 2. Launching WES-2 Bridge from the terminal

II. Check to see if the case is loaded

1. In the “WES II Bridge” window, find the cases in the “Available Cases” tab:

| | |
|---------------------|---|
| SimApp1 and SimApp2 | Hydro Case WFO Hydro Capability AWOC FF |
| SimApp3 | 2016Jun23 RLX FF |

2. Check the case’s status (Figure 3)
 - i. If status is “Not loaded”, then proceed to Step III.
 - ii. If status is “Loaded”, then proceed to next section.

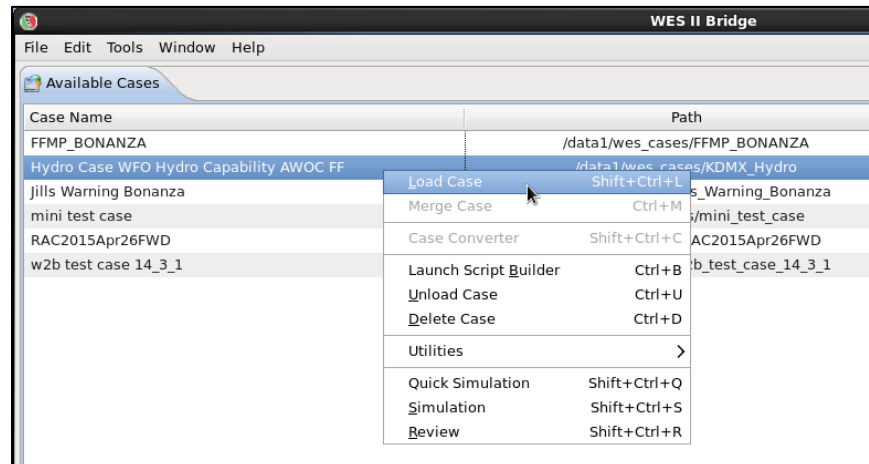


| Case Name | Path | Status | EDEX Instances |
|---|--|------------|----------------|
| FFMP_BONANZA | /data1/wes_cases/FFMP_BONANZA | Not loaded | |
| Hydro Case WFO Hydro Capability AWOC FF | /data1/wes_cases/KDMX_Hydro | Loaded | EDEX_02 |
| Jills Warning Bonanza | /data1/wes_cases/jills_Warning_Bonanza | Not loaded | |
| mini test case | /data1/wes_cases/mini_test_case | Not loaded | |
| RAC2015Apr26FWD | /data1/wes_cases/RAC2015Apr26FWD | Loaded | EDEX_04 |
| w2b test case 14_3_1 | /data1/wes_cases/w2b_test_case_14_3_1 | Not loaded | |

Figure 3. Available Cases tab, with case “Loaded” (boxed in red)

III. Load the case

1. In the “Available Cases” tab, right-click the case name and click “Load Case” (Figure 4).



| Case Name | Path |
|---|--|
| FFMP_BONANZA | /data1/wes_cases/FFMP_BONANZA |
| Hydro Case WFO Hydro Capability AWOC FF | /data1/wes_cases/KDMX_Hydro |
| Jills Warning Bonanza | /data1/wes_cases/jills_Warning_Bonanza |
| mini test case | /mini_test_case |
| RAC2015Apr26FWD | AC2015Apr26FWD |
| w2b test case 14_3_1 | b_test_case_14_3_1 |

Load Case

Merge Case

Case Converter

Launch Script Builder

Unload Case

Delete Case

Utilities

Quick Simulation

Simulation

Review

Figure 4. Available Cases tab, with case being loaded

- a. If a window appears saying “All EDEXs are full” (Figure 5), click OK and unload a loaded case from your “Available Cases” list. Once you do this, try again to “Load Case”, as described above.

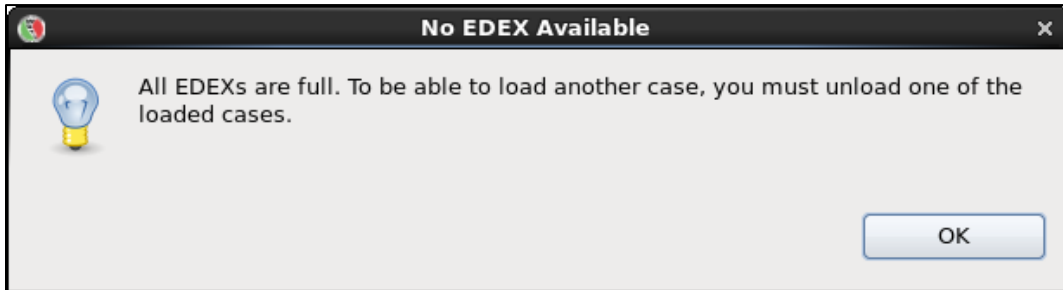


Figure 5. No EDEX Available window

- b. If a window appears saying “Do you want WES to start EDEX?” (Figure 6), click “Yes”.
 - i. This will start an EDEX, and then open the “Load Case” tab.

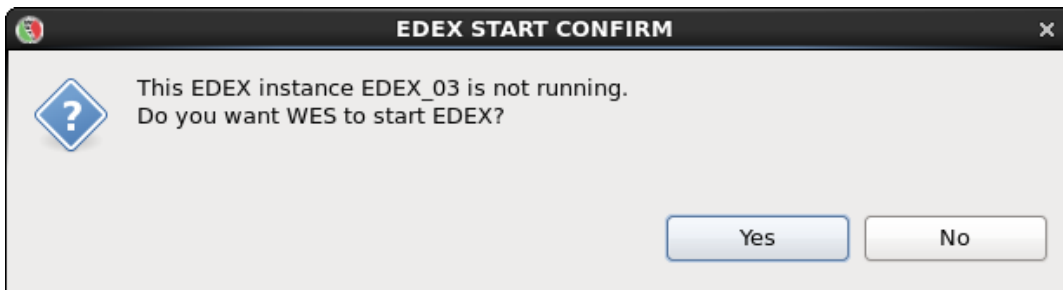


Figure 6. EDEX Start Confirm window

2. Ensure all details are correct in the “Load Case” tab (Figure 7).
 - a. Do NOT change the time window for loading the case!
3. Click “Load” (NOTE: it could take up to an hour to load).

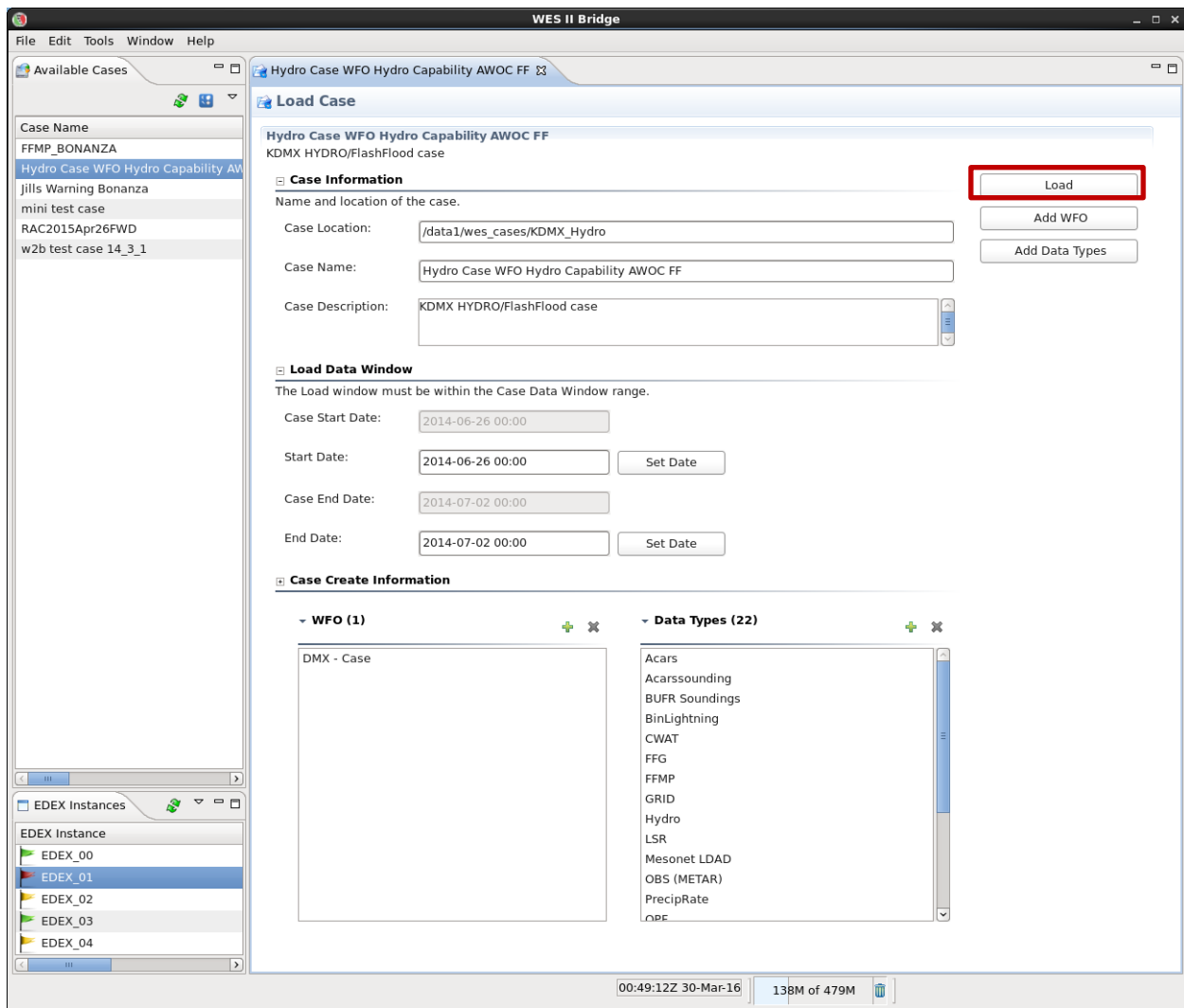


Figure 7. Load Case window, with “Load” boxed in red

Instructions for Launching Simulations (for Simulations #1 and #2)

I. Launch the simulation

1. Once it is done loading, the status will read “Loaded”.
2. Right-click the case name again, and click “Simulation” (Figure 8).

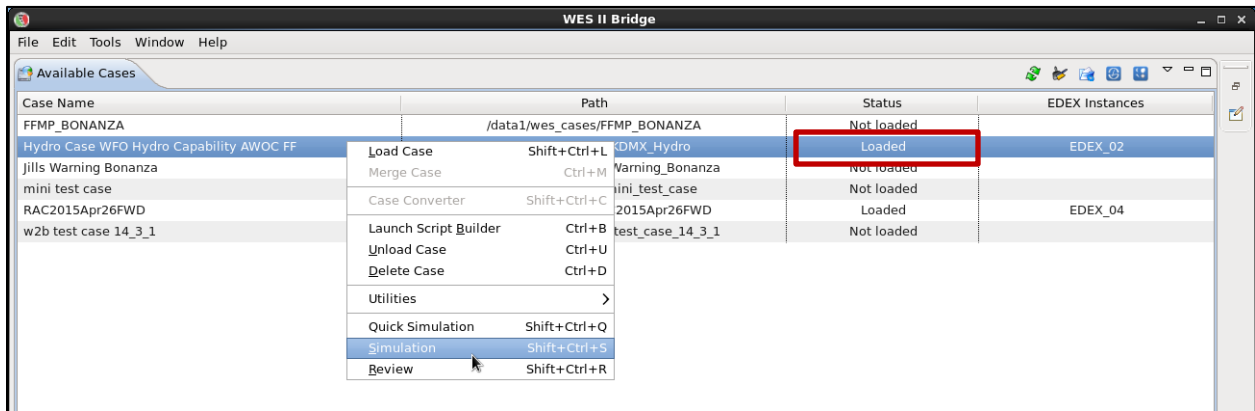


Figure 8. Available Cases tab, with case being run as a “Simulation”

3. On the “Simulation” tab, click “Load Macro” (Figure 9).

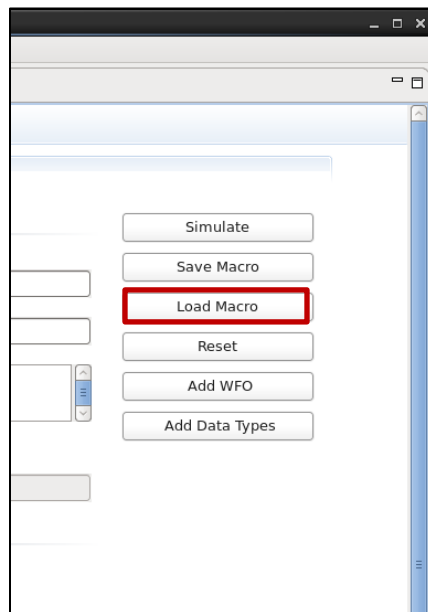


Figure 9. “Load Macro” on the right side of the Simulation tab

4. In the Macro Selection GUI, choose the macro for the corresponding simulation application, and press OK (Figure 10).

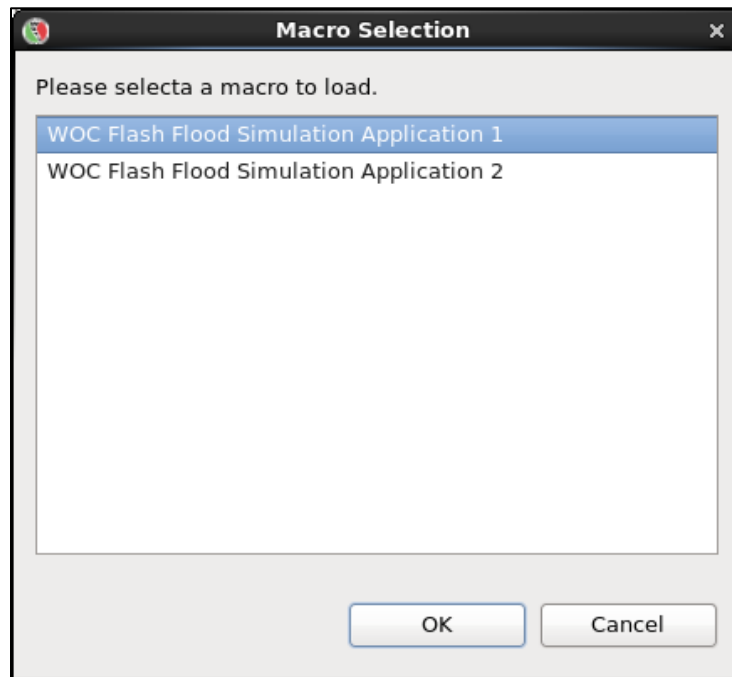


Figure 10. Macro Selection window

5. Using Table 1 and Figure 11, ensure all details are correct in the “Simulation” tab for the given simulation application, particularly:
- Simulation Data Time Range – Start Date
 - Simulation Data Time Range – End Date
 - WESSL Script
6. Click “Simulate” (A pop-up window will appear, and CAVE will open).

| Simulation Application #1 | |
|---------------------------------------|--|
| Macro | WOC Flash Flood Simulation Application 1 |
| Simulation Data Time Range Start Date | 2014-06-29 14:00 |
| Simulation Data Time Range End Date | 2014-06-29 16:00 |
| WESSL Script | WOC_Flash_Flood_Sim_Application_1 |
| Simulation Application #2 | |
| Macro | WOC Flash Flood Simulation Application 2 |
| Simulation Data Time Range Start Date | 2014-06-30 18:00 |
| Simulation Data Time Range End Date | 2014-06-30 19:30 |
| WESSL Script | WOC_Flash_Flood_Sim_Application_2 |

Table 1. Simulation launching details for SimApp1 and SimApp2

Hydro Case WFO Hydro Capability AWOC FF
KDMX HYDRO/FlashFlood case

(a)

Case Information
Name, location, and description of the case

Case Location: /data1/wes_cases/KDMX_Hydro

Case Name: Hydro Case WFO Hydro Capability AWOC FF

Case Description: KDMX HYDRO/FlashFlood case

☐ Is Remote

Host - JMS port: localhost

Load Data Time Range
The start and end dates of the loaded data must be within the case start and end dates.

Case Start Date: 2014-06-26 00:00

Start Date: 2014-06-26 00:00 Set Date

Case End Date: 2014-07-02 00:00

End Date: 2014-07-02 00:00 Set Date

Simulation Data Time Range
The start and end dates of the simulation must be within the start and end dates of the loaded data.

Start Date: 2014-06-29 14:00 Set Date

End Date: 2014-06-29 16:00 Set Date

WESSL Script: WOC_Flash_Flood_Sim_Application_1

☐ Remove warnings for the WFO

Hydro Case WFO Hydro Capability AWOC FF
KDMX HYDRO/FlashFlood case

(b)

Case Information
Name, location, and description of the case

Case Location: /data1/wes_cases/KDMX_Hydro

Case Name: Hydro Case WFO Hydro Capability AWOC FF

Case Description: KDMX HYDRO/FlashFlood case

☐ Is Remote

Host - JMS port: localhost

Load Data Time Range
The start and end dates of the loaded data must be within the case start and end dates.

Case Start Date: 2014-06-26 00:00

Start Date: 2014-06-26 00:00 Set Date

Case End Date: 2014-07-02 00:00

End Date: 2014-07-02 00:00 Set Date

Simulation Data Time Range
The start and end dates of the simulation must be within the start and end dates of the loaded data.

Start Date: 2014-06-30 18:00 Set Date

End Date: 2014-06-30 19:30 Set Date

WESSL Script: WOC_Flash_Flood_Sim_Application_2

☐ Remove warnings for the WFO

Figure 11. Simulation details for (a) SimApp1 and (b) SimApp2

II. Begin the simulation

1. Once CAVE has opened, find the Simulations Control GUI (Figure 12).
NOTE: While this GUI is often covered by other windows that WES-2 Bridge opens, you can easily find it by clicking on it within the bottom panel of your desktop.
2. Click the “Play” button in the Simulation Controls GUI. The WESSL script should run, and a recorded presentation should begin.

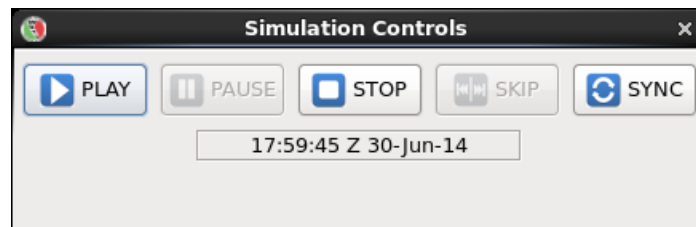


Figure 12. Simulation Control GUI

III. [Simulation Application #2] Open a Text Workstation

1. In CAVE, open the “CAVE” menu.
2. Select “New”.
3. Then select “Text Workstation” (Figure 13).

NOTE: This MUST be opened in order to use WarnGen!

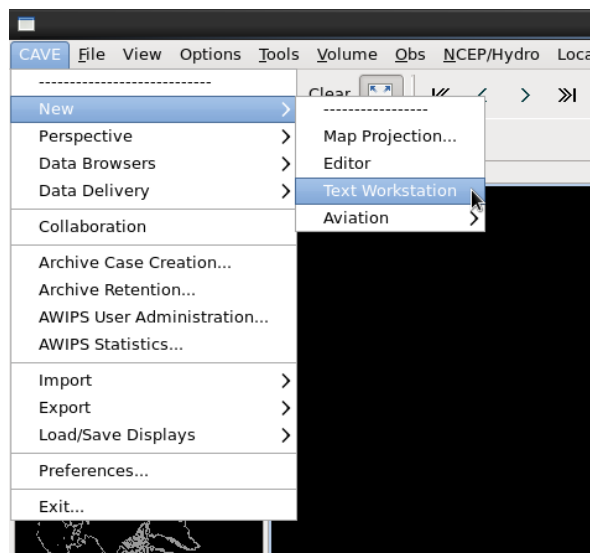


Figure 13. Opening a new text workstation in CAVE

Instructions for Launching Case Review (for Simulation #3)

I. Launch the case review

1. Once the case is done loading, the status will read “Loaded”.
2. Right-click the case name again, and click “Review” (Figure 14).

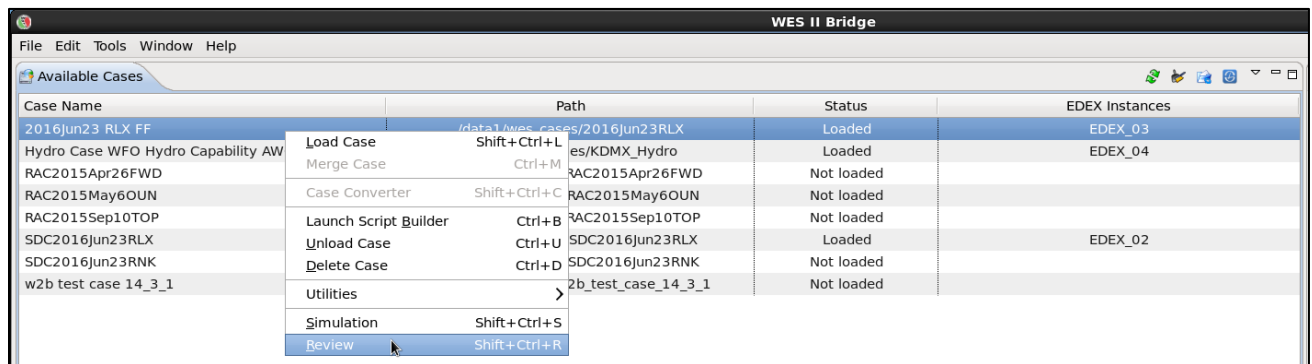


Figure 14. Available Cases tab, with case being run as a “Review”

3. On the Review Wizard window, simply press “Finish” (Figure 15).

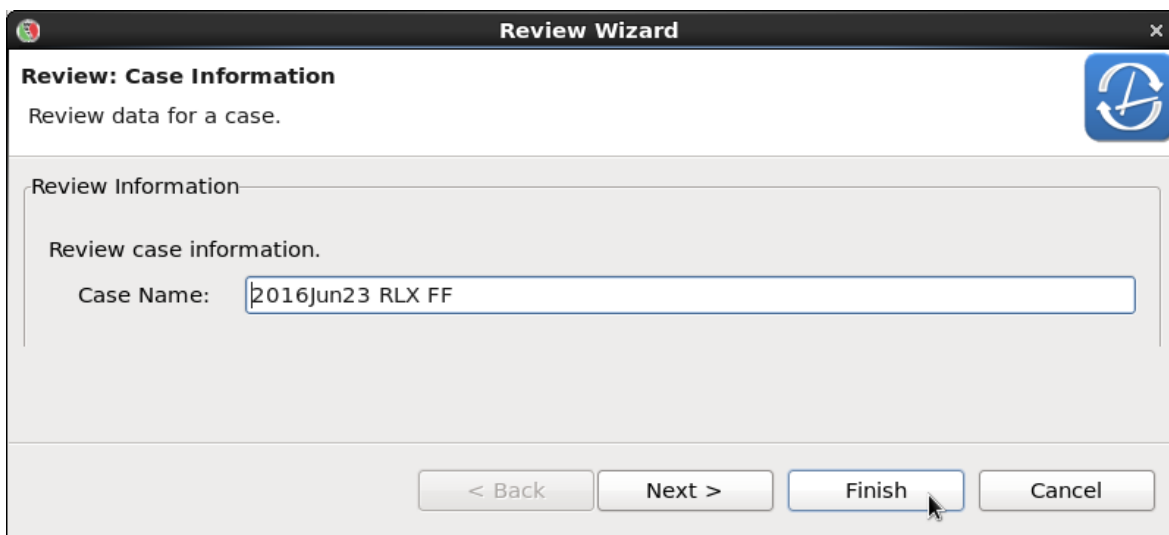


Figure 15. Review Wizard window

4. A blank CAVE window should appear, with the default time being the end of the case (Figure 16).

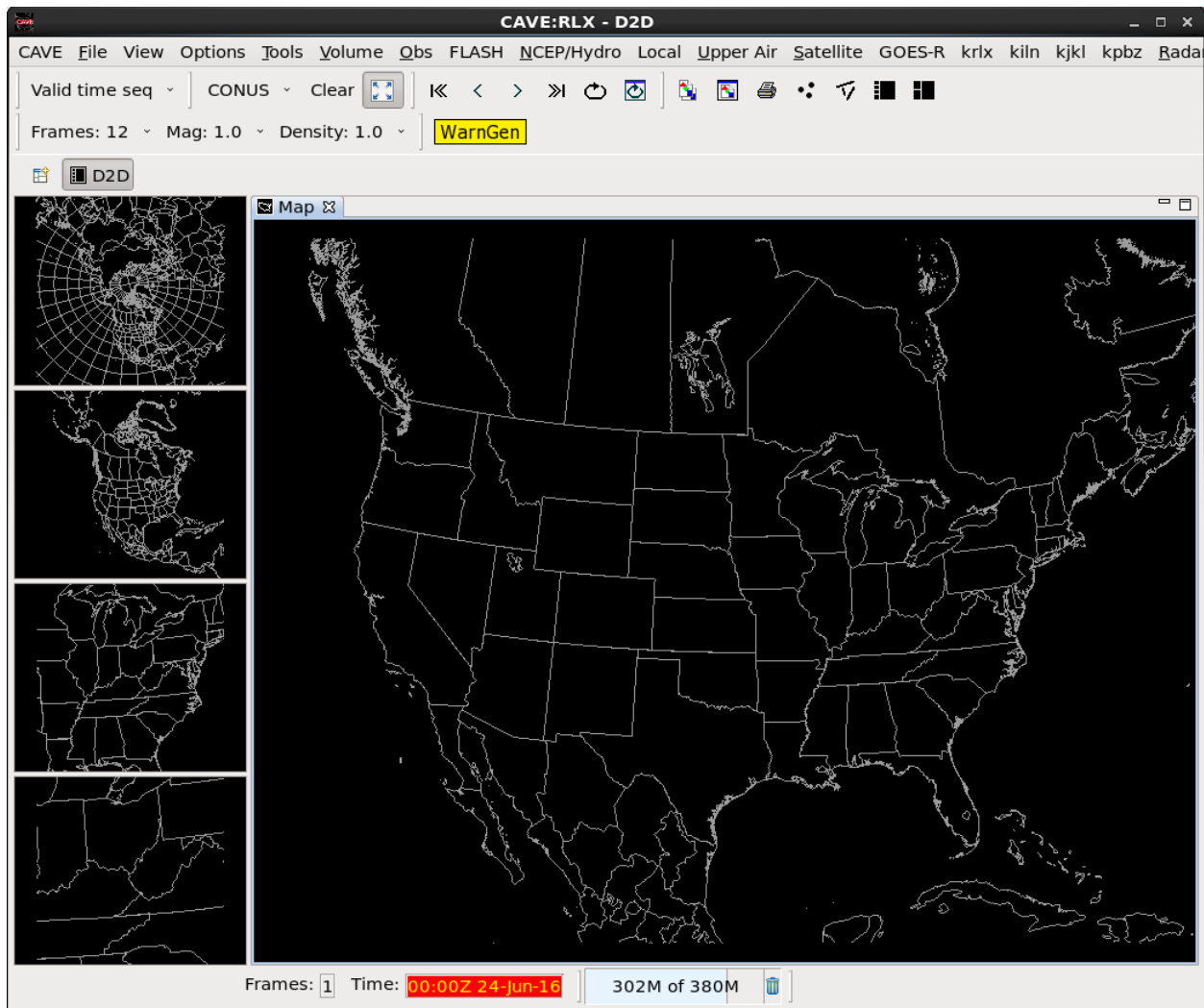


Figure 16. Default CAVE window that appears upon starting Case Review

II. Set the case to the desired time

1. Double-click on the time at the bottom of the CAVE window.
2. This will launch the “Set Time” window (Figure 17).
3. Make sure your settings match Figure 17.
 - i. June 23, 2016
 - ii. 22 hr 08 min 10 sec
 - iii. “Freeze time at this position” is checked

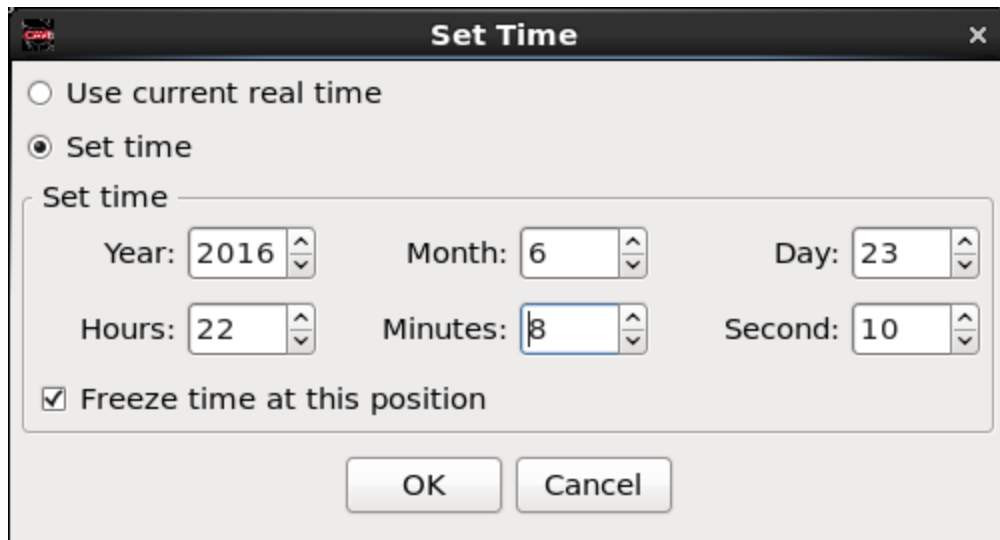


Figure 17. Set Time window, with desired settings for SimApp3

4. Press OK when you are done, and the main time display should update (Figure 18).



Figure 18. Correct time for SimApp3

5. You are now ready to proceed with the recorded presentation to complete the case objectives. You can find this presentation on the Training Resources Page.